

FLEXIBLE MANUFACTURER

CASE STUDY



DIVISION 9 ENGINEERED-TO-ORDER WOOD CEILINGS

Flexible Manufacturer

The Atrium Building – 800 Yates

Because of the tight schedule of the project, the finish work for the atrium was entirely completed in only eight weeks, including the assembly and dismantling of scaffolding.

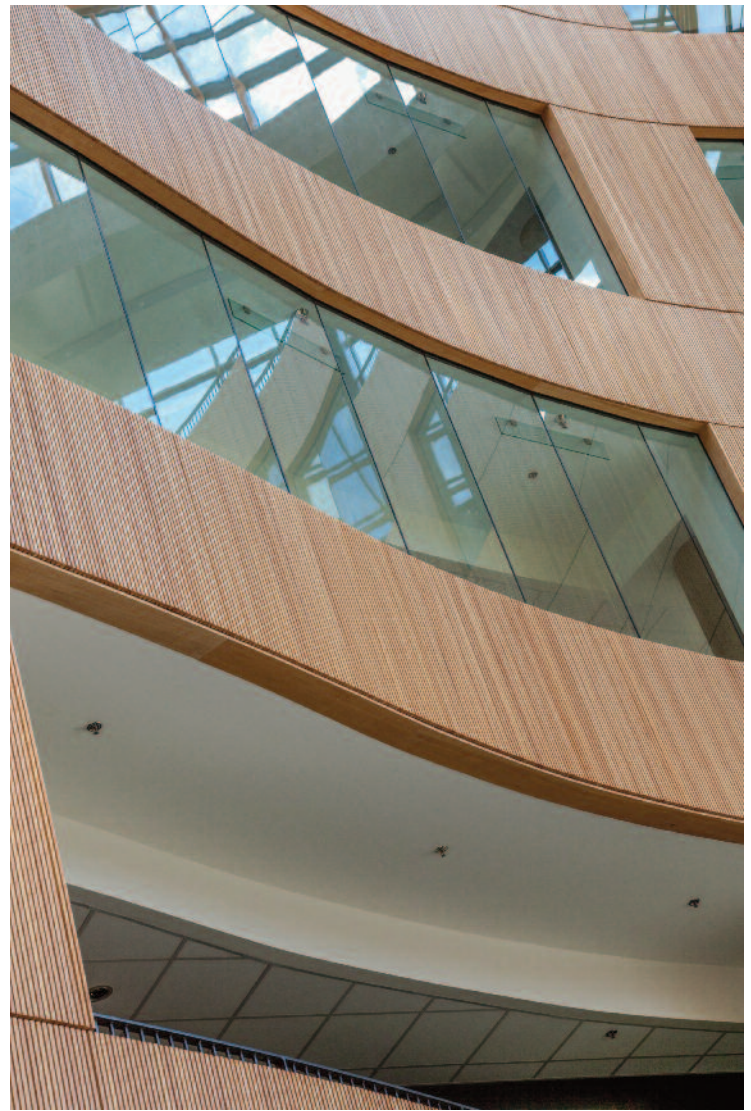


A tight schedule is perhaps the most challenging design environment. The margin for error is significantly reduced as mistakes or poor initial designs lead to costly schedule overruns. Coordination between the key players becomes paramount. The Atrium at 800 Yates Street, with a 10,000 square-foot wall featuring wood grille “wave” panels, is a perfect example of a successful design under an extremely demanding schedule.

The wood grilles form the walls of this large, seven-story central atrium in an innovative office building in British Columbia. Katherin Logan with D’Ambrosia Architecture summarized the space well: “The atrium is the heart of the building. It’s a semi-public urban ‘room.’ We chose wood to give it a sense of welcome that would be perceptible from the street.”

The building contains 200,000 square feet of office and retail space. The central atrium creates a spectacular arrival hall and provides an area for social interaction and casual meetings. It can also be adapted as a music venue for evening performances.

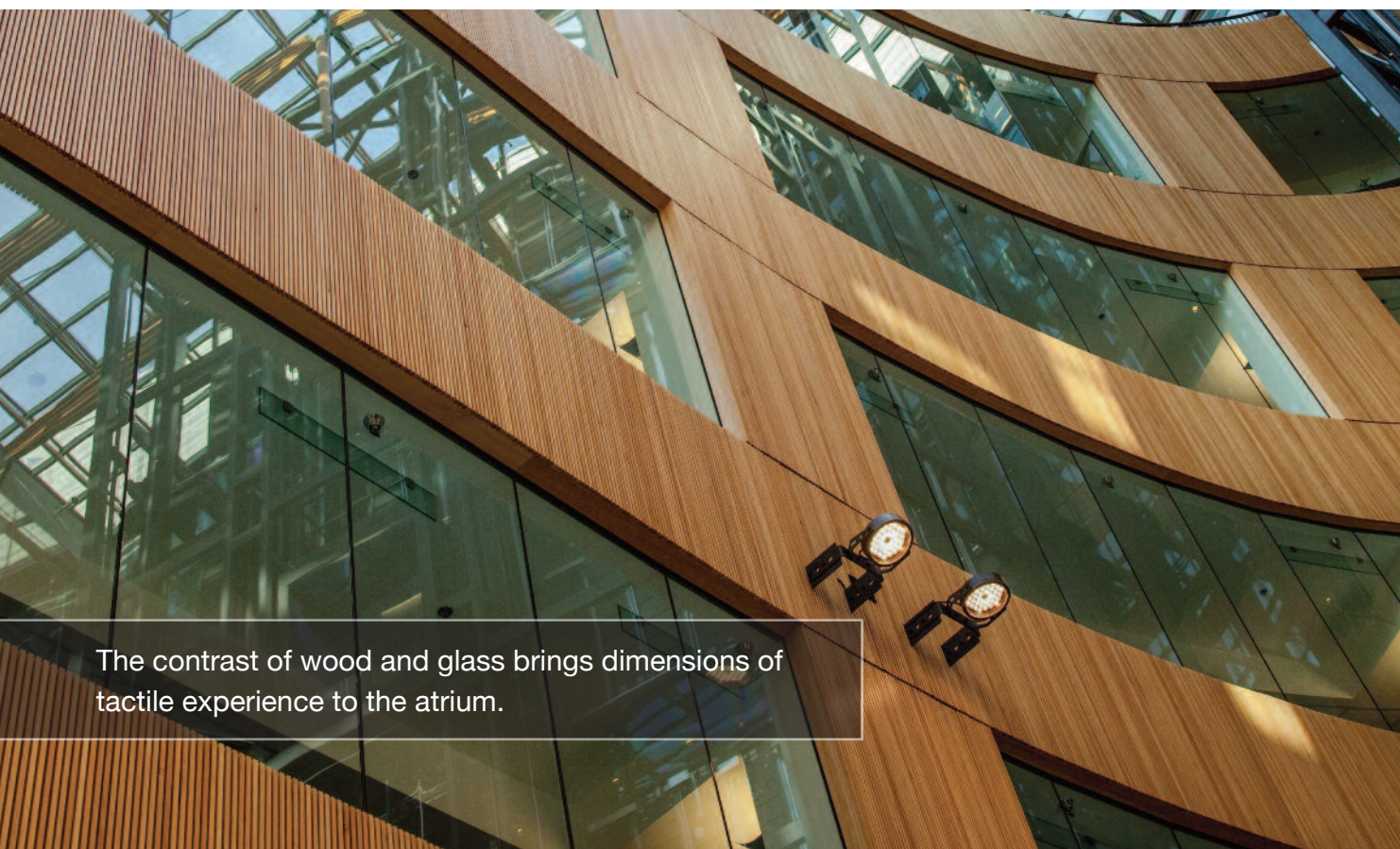
“We chose wood to give it a sense of welcome...”



The 9Wood grilles help the atrium fit into the larger building. Logan commented on the installed product: “The wood grilles are sort of a ‘wrapper’ making it legible and distinct from the office. To have that very fine scale over such an expansive area is really dramatic. When you walk into the atrium you say, ‘Wow!’ It’s a leap of scale from the fine to the very large.”

The wall grilles are the most visually striking aspect of the atrium. The grilles are composed of 5/8” x 1” Western Hemlock members. The relatively tight 3/8” reveal between members emphasizes the wood, while still allowing the grilles to curve to match the atrium’s undulating shape.

The reveals between members also create a high noise transfer coefficient, which allows for *(continued on page 4)*



The contrast of wood and glass brings dimensions of tactile experience to the atrium.



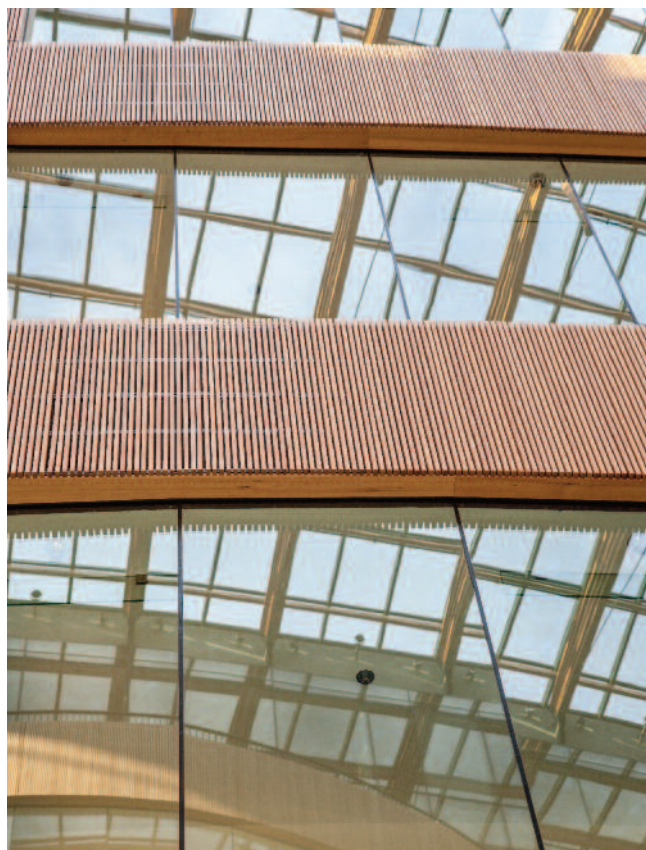
Small reveals provide a monolithic appearance while allowing acoustic performance.

acoustic material set behind the grille to control the acoustics of the vast open space. “The grilles are part of the acoustic strategy. We worked with an acoustical engineer to design those walls,” added Logan.

The glass atrium ceiling fills the space with natural light, which interacts with the warm tones of the natural Western Hemlock to create a genial atmosphere. The grilles intersect and accent banks of windows, which add to the brightness of the space and provide a sense of openness with the offices and retailers surrounding the atrium. Speaking to the building’s language of the exterior translating to the interior, Logan reflected: “We wanted to use the slats because they could take the curves so elegantly. The outside of the building has radiused corners; the glass and concrete panels curve. Those materials have a ‘liquid’ form and we wanted to keep those bends from exterior to interior, so we chose wood. They give a ‘lightness’ to the material that we couldn’t have achieved with a solid-faced wood panel. The wood slats slide effortlessly across the space.”

What is truly remarkable about the project is the speed with which it was accomplished: from submittals to full install in less than four months. In an industry where projects can stretch over several months or even years, this is truly remarkable. An early web conference between 9Wood, 9Wood rep Mark Bromley of Cascadia Design, the subcontractor, general contractor and owner set the tone for the project.

This level of precision, combined with a highly skilled installer and a well-designed product produced fantastic results. As one of the project managers for the installer recalled: “The product was amazing. It’s got to be the best project I’ve ever worked on.” This was made possible because of good coordination and flexibility on the part of the supply chain, the designer, the manufacturer, and the installer. The result is an exciting and beautiful new building.



The Atrium Building – 800 Yates

Project Details

The Atrium Building – 800 Yates
Victoria, BC

Total Scope: 9,638 SF

Product: 8100 Wood Grille Wave

Architect: D'Ambrosio

Contractor: Winroc



DIVISION 9 ENGINEERED-TO-ORDER WOOD CEILINGS

9Wood

999 South A Street
Springfield, OR 97477
Tel: 888-767-9990
sales@9wood.com

www.9wood.com

© 9Wood 2020
All rights reserved
Photography credit:
Mark Bromley

This information is for illustrative purposes only. The featured products and processes are specific to the project and should not be duplicated without consulting 9Wood.